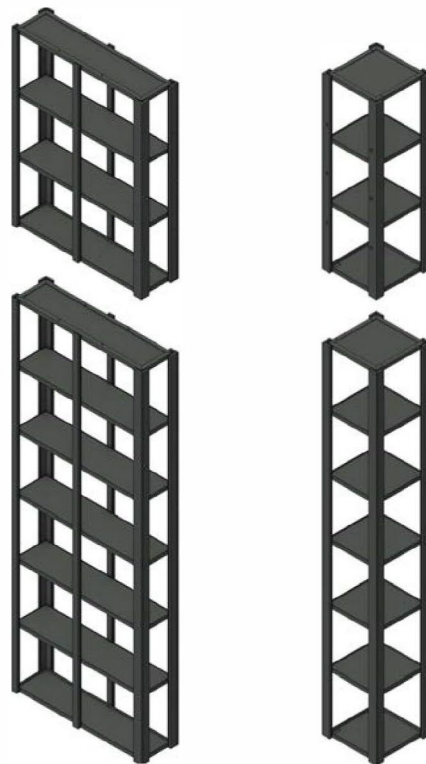




MODULAR SCENIC SYSTEM

At a glance

- **17** module frame units measuring 12' x 3'1.5"
- **7** column frame units measuring 1'3.375" square
- **Modularity:** Modules and Columns break down into a 4'H component and an 8'h component; these components can be used individually
- **Lightweight Design:** Module and column frames are primarily constructed of aluminum to make rapid setup and teardown possible.
- **Freestanding:** The modular system is designed to be freestanding.
- **Graphic Application:** The modular scenic system is specifically designed to be easily wrapped with graphics to allow for a wide variety of photorealistic finishes. Tack strips on the frames make for easy stretching of fabric. A rental of the modular system includes a CAD file of the modules so a graphic designer can easily create dimensionally accurate graphic wraps.
- **Versatility:** Frames can be wrapped with graphics, or left uncovered to serve as shelving or window frames. Frames are a matte black finish.

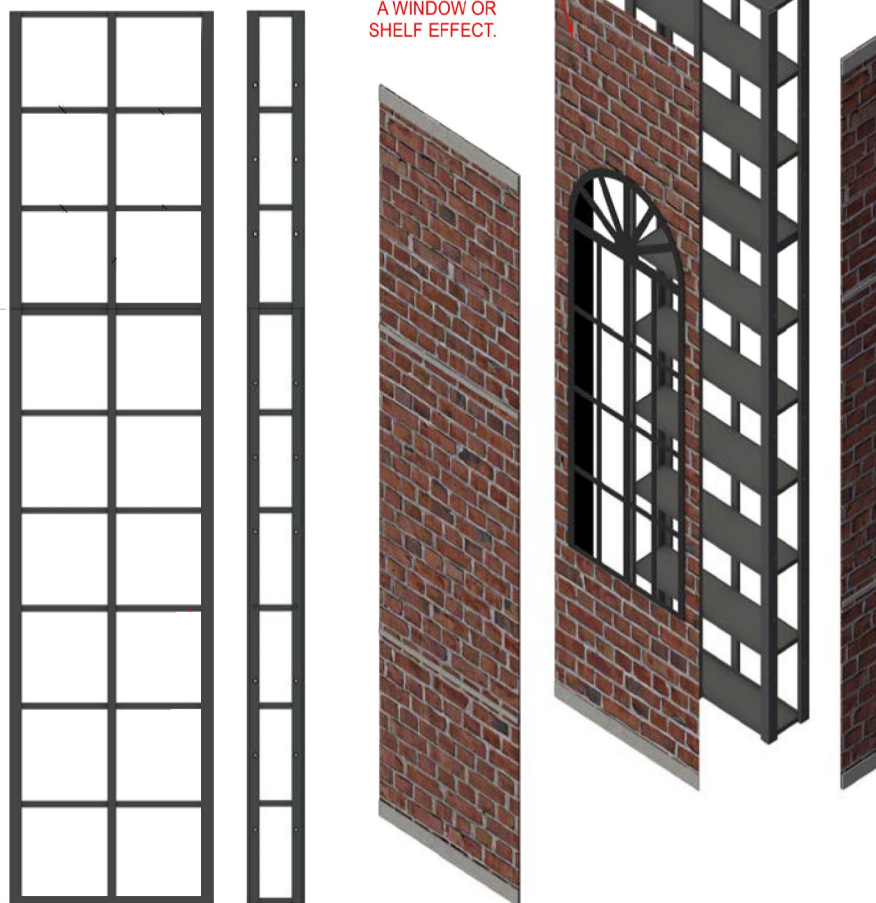


THE MODULE THE COLUMN

DESIGNED TO BE WRAPPED IN GRAPHIC PRINTS TO ACHIEVE REALISTIC SCENIC FINISHES. FRAMES CAN ALSO BE LEFT OPEN TO CREATE A WINDOW OR SHELF EFFECT.



Modules and columns in action on two recent productions at Stamford Studios. Designer: James Pearse Connelly.



FRONT VIEW

SIDE VIEW

ISOMETRIC VIEW